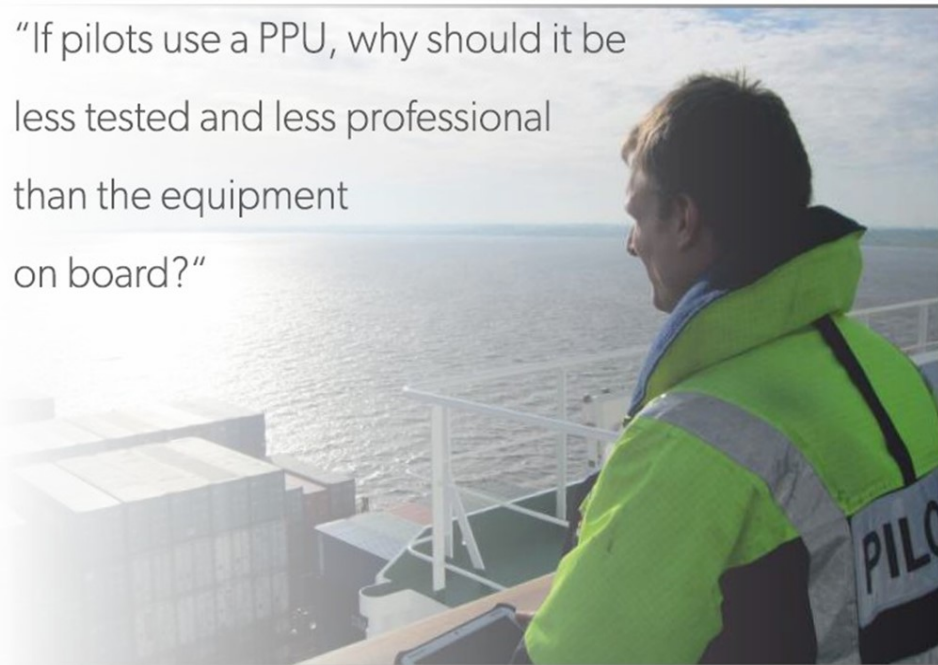


"If pilots use a PPU, why should it be less tested and less professional than the equipment on board?"



i.Master for your 'Peace of Mind'



As a Maneuvering Support

- ◇ Planning—Visualization of navigation planning risks.
- ◇ Collision Prevention—Visualization of CPA/TCPA
- ◇ Grounding Prevention
- ◇ Docking Support

The World's 1st Type Approved PPU



- Officially passed new DNV GL industry standard for PPU's
- ISO 9001 quality assurance for software development
- Compliant with international standards of bridge equipment.
- Ideal support tool for Master-Pilot exchange



FOR INQUIRIES: ppu-support@yms.co.jp

We offer Cost-free trial, please contact us for information and solutions for your PPU setup needs.



株式会社 日本海洋科学
Japan Marine Science Inc.

i.MASTER



The World's 1st Type Approved Portable Pilot Unit

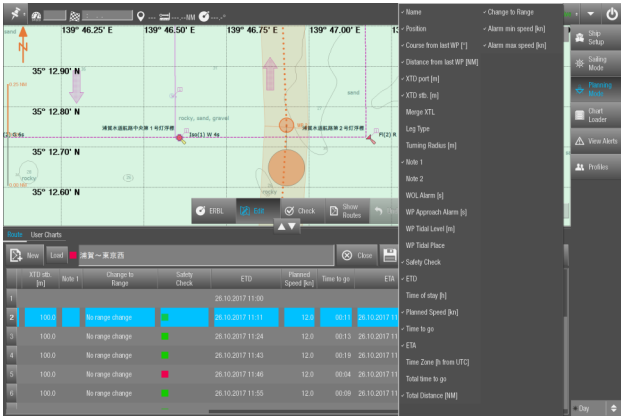


PRODUCT HIGHLIGHTS



- In addition to the official electronic chart, it is also possible to display submarine topographic maps and the like
- User interface by touch operation
- Displaying AIS information of ship and other ship on electronic chart
- Predicted Route Display
- Automatic measurement of the distance from the berth and other ships at the time of unberthing.
- Automatic recording of ship maneuvering results, replay possible
- Various alarm functions such as safety water depth, with high safety margin
- Easy chart updating, creation of a passage plan
- Arbitrary User chart creation can be displayed simultaneously or overlapped.

Creation of Passage Plan




Narrow Channel Navigation / Split Screen Display




Chart Handling made easy

- Most automated chart loading algorithm ever used in a PPU system— automated and direct download thru FTP (Optional)
- Support of ENC, bENC, Inland ENC, Admiralty Information Overlay (AIO) and CMap Data.



Please scan the QR code to experience more functionalities



UTILIZATION OF iMASTER

In addition to maneuvering assistance, it can be used for accident analysis and training scenarios based on automatically recorded 'replay' data, and it is also possible to link with customers' database and management system (optional).

It can also be used as a navigation pad that allows you to exchange various data using iMASTER as a terminal.

It is possible to set Navigation Pad as the central station in the office, manage data from iMASTER all at once, and conversely distribute schedule, ship data, navigation safety information etc. from the office to iMASTER (*contact PPU for this option*).

